



# Microsoft's Vista

## A Comprehensive Overview

# Installation

- Unique platform – MacBook, a single install
  - Dual boot (Apple’s Boot Camp)
  - VMware – virtual Machine
  - Dual mode activation required
- The Vista disk – Home Premium, 20 minute install
  - Install options
    - Language/region, clean install
    - Turn off auto-update, auto-activation
  - Repair options
    - Startup repair, system recovery
    - Windows complete PC restore (from image)
    - Memory diagnostic, CMD prompt

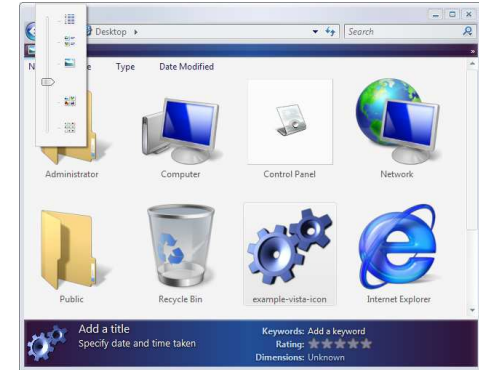
# Drivers & Activation

- Installation - MacBook
  - Apple Boot Camp
  - VMware
- Windows activation
  - Defer until proper driver functioning confirmed
  - Activate Boot Camp 1<sup>st</sup>
  - Insure VMware tools installed, activate VMware 2<sup>nd</sup>

# Initial Boot

- Workgroup request
- Welcome Center
  - All Programs | Welcome Center
- Windows Sidebar
  - All Programs | Accessories | Windows Sidebar
- Windows Sidebar Properties
  - Control Panel | Windows Sidebar Properties

# Desktop Personalization



- Control Panel | Personalization OR right-click empty desktop & select personalize
- Change
  - Icons, font size, projector
  - Color, background, theme, sounds, mouse pointer, screen saver, display properties
    - How to access custom power settings
      - Power button warning for laptop users

# Taskbar & Start Menu

- Control Panel | Taskbar & Start Menu OR right-click taskbar & select properties
- Change
  - Toolbars
  - Properties – Taskbar, Start Menu, Notification
- Feature
  - Start Task Manager
    - Shift – Control – ESC

# Explorer Personalization

- Views
- Organize
  - Layouts
  - Folder & search options
    - General, view, search
    - View hidden & super hidden files
- Status bar options
  - Right-click sweet spot

# Default Programs

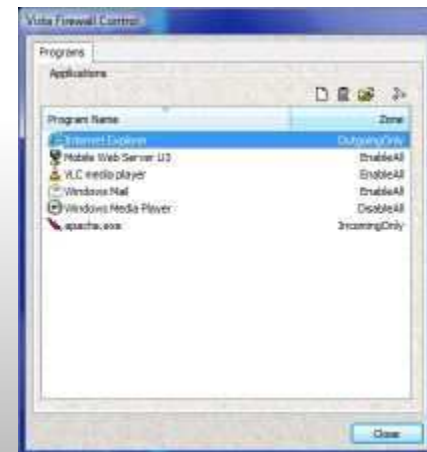
- All Programs | Default Programs
- Set default programs
- Set file type association
- Change auto play settings
- Set program access & defaults

# Networking Setup

- Workgroup – default name is Workgroup
  - Control Panel | System | Advanced system settings | Computer Name | Change
- Network & Sharing Center
  - Control Panel | Network & Sharing Center
  - Private vs Public – default public
    - Network & Sharing Center | Customize
  - Network discovery
    - Network & Sharing Center | Network discovery

# 2-Way Firewall

- By default is configured to operate as a 1-way
- Public / private network setting affects config
- By default does not accept Ping (ICMP) requests
  - Can be reconfig'd from
    - Control Panel | Administrative Tools
    - Granular control for public, private, & domain networks
- 3<sup>rd</sup> party software add-on for 2-way control
  - Vista Firewall Control
    - <http://www.sphinx-soft.com/Vista/>
    - Can be confusing
    - Free & pay versions



# Windows Security Center

- Firewall
- Automatic updating
- Malware protection
- Other settings
  - Internet – IE settings including
    - How to start w/blank page while having home page
    - Protective mode
  - UAC
    - Rootkit protection ([Google: UAC rootkits](#))
    - Administrator account not UAC protected
      - net user administrator PWD
      - net user administrator /active:yes

# Autoruns, UAC, & Task Scheduler

- Example of how to autorun CCleaner under UAC
  - Use CLI command to run CCleaner in Task Scheduler
    - Variation of “ccleaner /auto”

# Windows Update

- No longer uses IE to access updates
- Separate stand-alone interface
  - Shows available updates
  - Shows history
  - Links to CP auto update interface config

# Control Panel Overview

- Accessing – opening as window or menu
- Control Panel Home vs Classic View

# Windows Mail

- Replaces OE (Outlook Express)
  - Continues support for IMAP, POP3, NNTP protocols
- Contacts replaces WAB (Windows Address Book)
- Incorporates a shareable calendar

# Reliability & Performance Monitor

- In administrative tools folder
  - All Programs | Administrative Tools
    - Turn on in Start Menu config
- Use search to access if admin folder not visible
  - Start | Start Search
  - Type “reliability”
- Rates stability of OS
  - Shows history of failures

# Vista Search & Indexing

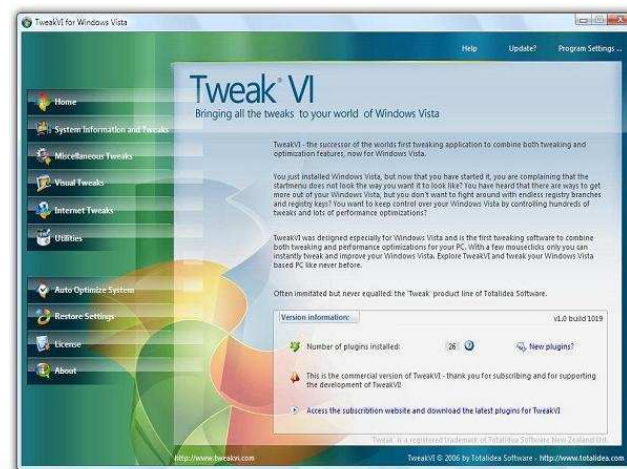
- Start | Start Search
  - Advanced search
- Setting indexing options
  - Drive indexing option
  - Files that can be included

# Task Manager

- Shift – Control – ESC
  - No longer Control – Alt – Del
    - Brings up options menu which includes Task Manager
- Performance tab
  - Resource monitor link

# Tweaks & Utilities

- System – Startup & Recovery
  - Control Panel | System | Advanced system settings
  - Disable automatic restart
  - Set for small mini-dump or none
- Free 3<sup>rd</sup> party software
  - [TweakVI](#)
  - [WinBubbles](#)
  - [ViStumbler](#) for wireless networks
  - [Script / command elevation powertoys](#)



# Hints & Tips

- Command prompt here
  - <http://blogs.msdn.com/tims/archive/2006/09/18/windows-vista-secret-1-open-command-prompt-here.aspx>
  - Right-click on any folder on your Windows Vista machine while holding down the shift key. You'll see an extra context-sensitive menu item there: Open Command Prompt here. Just click on this menu and a command window will open with the current working directory set to the folder's actual location.